

KOMATSU TRACK SPECIAL

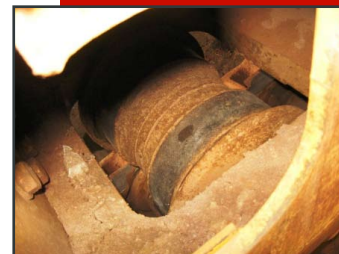
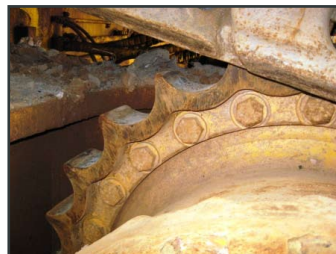
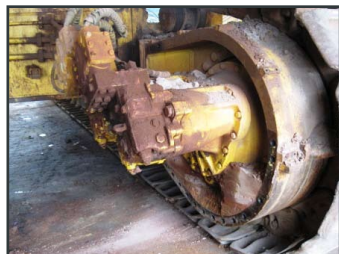
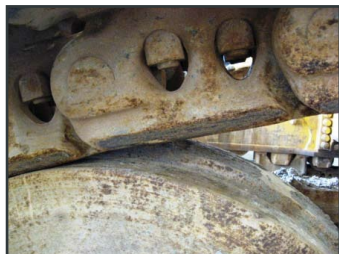
We can offer a complete set of undercarriage including -

- both track frames complete with final drives;
- travel motors;
- HIC cylinders;
- track link assy;
- idlers;
- track adjusters;
- and sprockets along with the covers and piping

| % Worn | Right Hand | Left Hand |
|-------------|------------|-----------|
| Track Link: | 20 | 26.4 |
| Track Bush: | 29 | 17 |

Track and carrier rollers are 10-15% worn
Sprockets are the same as are the idlers

| QTY | PART NUMBER | DESCRIPTION |
|-----|--------------|----------------|
| 1 | 21T-32-01012 | TRACK ASSY |
| 16 | 21T-30-00080 | TRACK ROLLER |
| 6 | 21T-30-00090 | CARRIER ROLLER |
| 2 | 21T-30-00290 | IDLER ASSY |
| 2 | 21T-27-71175 | SPROCKET |
| 2 | 21T-27-00103 | FINAL DRIVE |



Contact Andrew for further information on

E barnesa@adgglobalsupply.com

T +61 8 9249 7599

Head Office Australia

17 Oxleigh Drive Malaga Western Australia 6090

PO Box 2012 Malaga Western Australia 6944

T +61 8 9249 7599 **F** +61 8 9249 7699

www.adgglobalsupply.com

Perth

Adelaide

Melbourne

Sydney

Brisbane

global
procurement

drilling fluids and
equipment

tyre sourcing and
distribution

universal
pumps