

MEERKAT PT Shaker

The compact, modular shaker that delivers high performance and a wide range of configurations



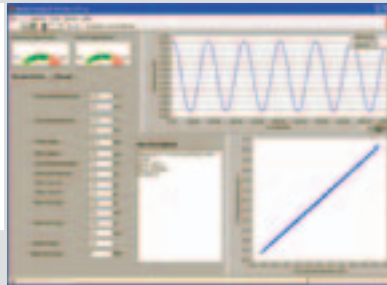
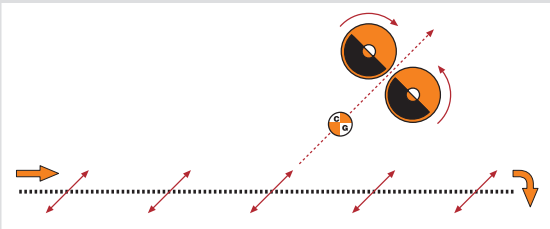
Mi SWACO

Customer-focused, solutions-driven



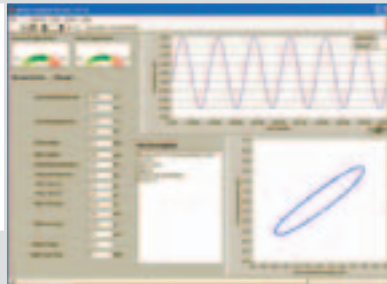
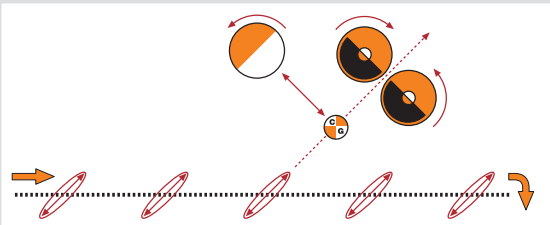
Comparison of balanced elliptical motion to linear motion

Linear Motion



- G-force linear motion up to 6.9 G's
- Speeds conveyance
- Increases shaker-fluid capacity
- Enables shaker to process heavier solids loads
- Enhances cuttings-processing volume

Balanced Elliptical Motion



- Uniform elliptical motion at all points on basket
- Reduces G-forces (5.7 G's maximum)
- Optimizes solids removal
- Maximizes drilling-fluid recovery
- Drier cuttings
- Extends screen life

The M-I SWACO* MEERKAT* PT shaker represents the latest developments in compact, modular design and the flexibility for multiple configurations to meet a wide range of customer requirements and rig environments.

This brochure is a reference to the two standard configurations of the MEERKAT PT shaker:

- Standard MEERKAT PT shaker with header box
- Standard MEERKAT PT low-profile shaker with possum belly

All motor specifications (hp, voltage, speed) are nominal values and may vary with configurations. Additional nonstandard configurations of the MEERKAT PT shaker will be made available upon customer request.

M-I SWACO reserves the right to update this brochure when applicable. If there are any questions concerning the data specified in this document, please contact M-I SWACO.

MEERKAT PT Linear- and Dual-Motion Shaker



APPLICATIONS

Drilling rigs and separation operations where space is at a premium and performance requirements are high.

PROBLEMS

Because drilling rates and conditions change as drilling progresses, solids-control equipment must handle varying solids characteristics. When premium drilling fluids are used, maximum fluids recovery is of critical concern.

SOLUTIONS

The dual-motion MEERKAT PT shaker not only manages the high cuttings volumes associated with surface hole sections (linear motion), it can change on the fly to balanced elliptical motion for longer cuttings-retention times. Shaker performance gets an extra boost from M-I SWACO specialists and field personnel who provide expert advice and service.

ECONOMICS

The generous throughput capacity of the shaker can handle cuttings loads generated by high ROP, saving rig time. The balanced elliptical motion recovers greater amounts of valuable drilling fluid, produces drier cuttings for easier disposal and prolongs screen life.

ENVIRONMENTAL

The MEERKAT PT shaker processes cuttings more thoroughly than conventional units, producing cuttings that require less treatment for disposal. The thorough processing also reduces the need for dilution which results in smaller waste volumes.

The flexibility of dual motion

The dual-motion shale shaker that adapts as solids change

M-I SWACO has combined linear and balanced elliptical motion technology to create the revolutionary MEERKAT PT dual-motion shaker. The design incorporates a 0.6-hp vibrator motor that allows it to perform on an unparalleled level.

But as drilling conditions change, the MEERKAT PT dual-motion shaker can be adjusted “on the fly.” Simply flipping a switch on the control box reconfigures the shaker from linear to balanced elliptical motion. There is no need to suspend or shut down operations. With the

MEERKAT PT shaker operating in the gentler balanced elliptical mode, solids encounter reduced G-forces and longer screen residence time. This results in drier solids, improved drilling-fluid recovery, longer screen life and reduced operating costs.

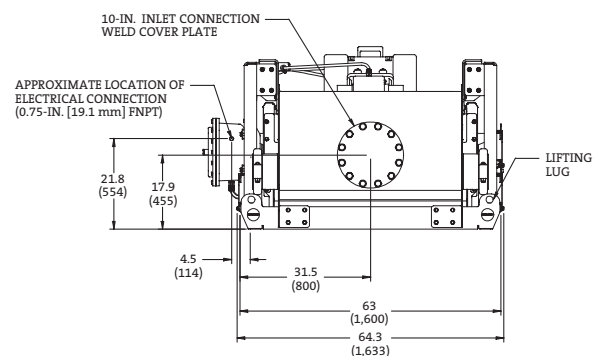
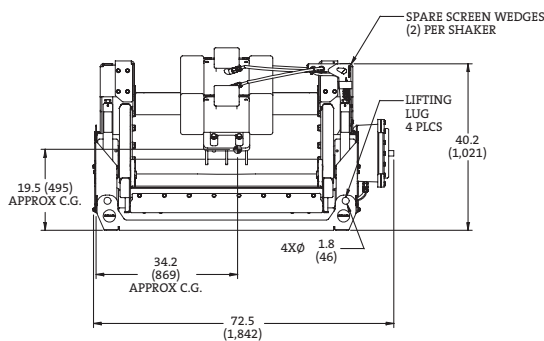
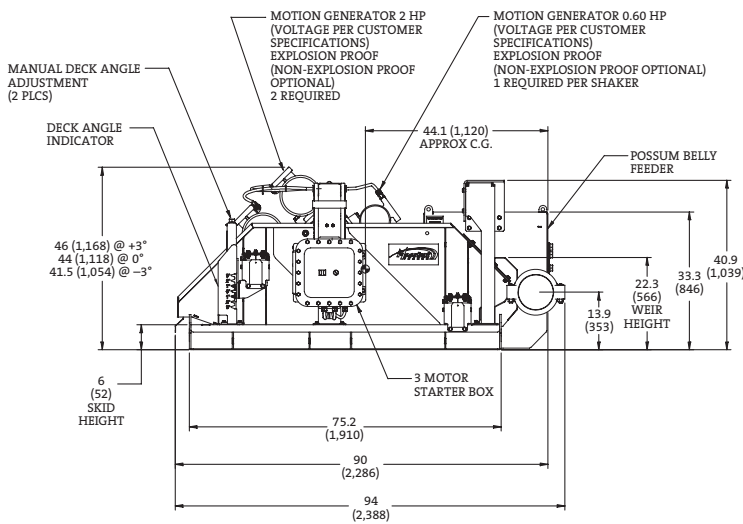
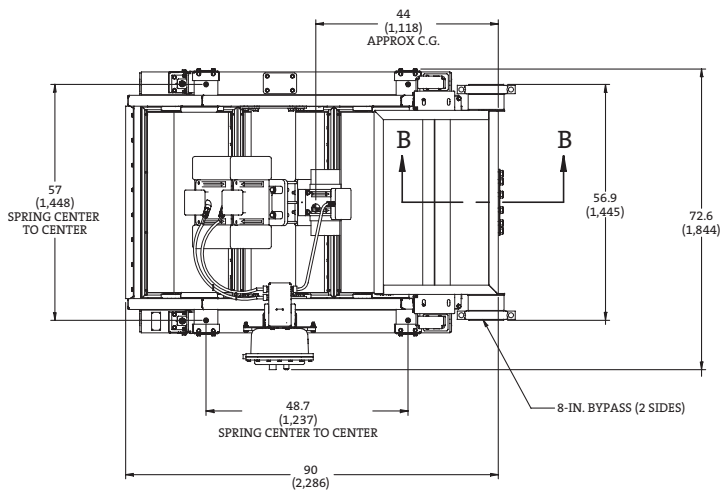
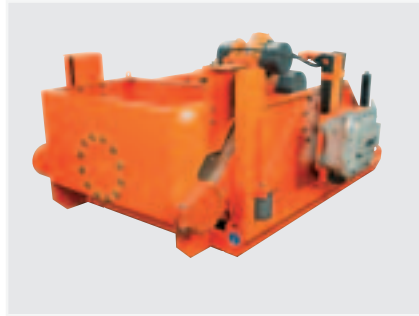
The economy of linear motion

The dual-motor MEERKAT PT linear-motion shaker is especially effective while drilling top-hole sections where heavy, high-volume solids are usually encountered. In these intervals, shakers need to generate high G-forces to effectively move dense solids across the screens.

Features and Benefits

- Units can be customized to meet both tight-space requirements and high-performance criteria
- All configurations are compact and modular
- Linear motion for fast conveyance and heavy loading; balanced elliptical motion for maximum retention time and drier cuttings
- Elliptical motion at the flip of a switch without stopping the shaker
- Balanced basket functions flawlessly in either linear or balanced elliptical mode, with dry, light loads or wet, heavy loads
- Most reliable mechanical jacking system in the industry — simple and easy to use; requires no pinning
- Unique distribution box option can replace flowline possum belly, providing increased handling capacity and dampening the velocity of fluid from the flowline
- Pre-tensioned composite screens for fast screen changes and overall ease of use
- Ultra-tight seal between screen and screen bed eliminates solids buildup and costly bypass of solids
- Largest net-usable screen area among shakers of similar footprint: 15.9 ft² (1.5 m²)

Standard MEERKAT PT low-profile shaker with possum belly



Specifications

- Length 94 in. (2,388 mm)
- Width 72.5 in. (1,842 mm)
- Weir height 22.3 in. (566 mm)
- Height 44 in. (1,118 mm)
- Weight 2,965 lb (1,345 kg)

Screen Deck and Screens

- Screen area:
Gross: 22 ft² (2 m²)
Net (API): 15.9 ft² (1.5 m²)
- Deck-angle adjustment: -3° to +3°
- Screen type: Pre-tensioned 4 x 2 ft (1.2 x 0.61 m)

Basket Isolation

- Powder-coated steel springs

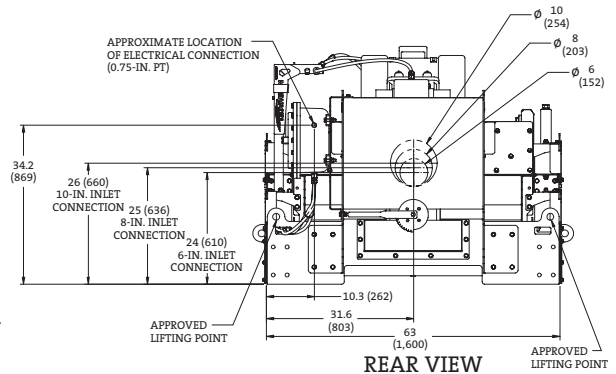
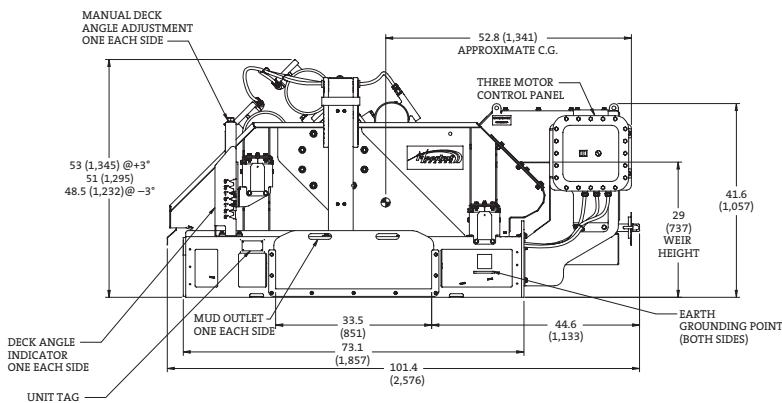
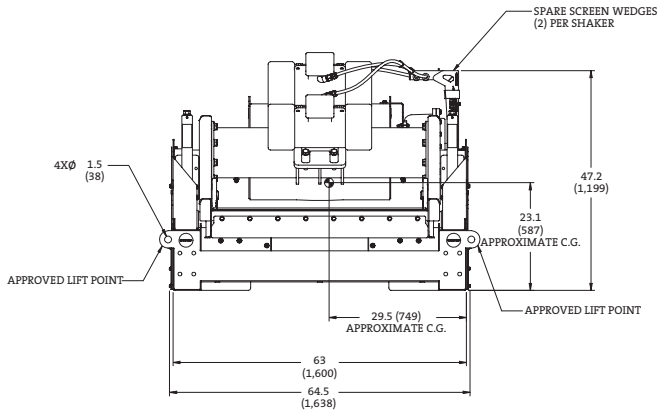
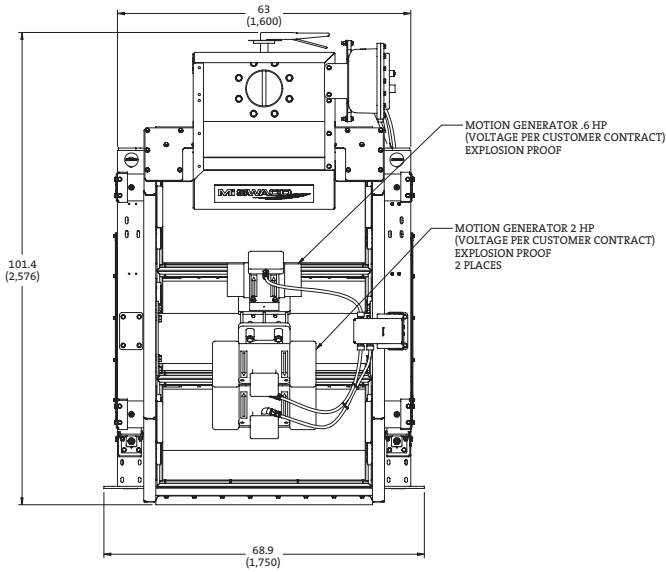
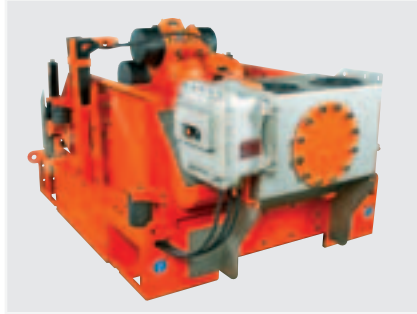
Motor Specifications

- Two (2) primary vibrator motors
- One (1) secondary vibrator motor on dual-motion model
- 440-480V/60 Hz/1,800 rpm or 380-415V/50 HZ/1,500 rpm
- Explosion proof
- Class I, Groups C and D
- UL/cUL, CE, ATEX, NORSOK

Basic Fluid Capacity

- 500 gpm (1,893 L/min)

Standard MEERKAT PT shaker with header box



Specifications

- Length:
 - Linear motion 96.6 in. (2,454 mm)
 - Dual motion 120 in. (3,048 mm)
- Width 68.9 in. (1,750 mm)
- Weir height 29 in. (737 mm)
- Height 51 in. (1,295 mm)
- Weight 3,145 lb (1,427 kg)

Screen Deck and Screens

- Screen area:
 - Gross: 22 ft² (2 m²)
 - Net (API): 15.9 ft² (1.5 m²)
- Deck-angle adjustment: -3° to +3°
- Screen type: Pre-tensioned 4 x 2 ft (1.2 x 0.61 m)

Basket Isolation

- Powder-coated steel springs

Motor Specifications

- Two (2) primary vibrator motors
- One (1) secondary vibrator motor on dual-motion model
- 440-480V/60 Hz/1,800 rpm or 380-415V/50 Hz/1,500 rpm
- Explosion proof
- Class 1, Groups C and D
- UL/cUL, CE, ATEX, NORSOK

Basic Fluid Capacity

- 500 gpm (1,893 L/min)

In any configuration, the MEERKAT PT shaker takes performance to a new level

The MEERKAT PT shaker's modular construction is as basic and important to its success as the unit's dual-motion capability. By incorporating the concept of modules, M-I SWACO has built big advantages into the MEERKAT PT shaker. Customers have the option of bolting single MEERKAT PT units into a dual or triple configuration, with different feed systems and

mud cleaner options. In the field, rig personnel can reconfigure the unit quickly, via bolted connections, to meet changing requirements.

Another big advantage of the M-I SWACO bolted, modular design becomes apparent when it's time to ship the unit internationally. With the M-I SWACO mobilization option, our crews will partially

disassemble the MEERKAT PT shaker and pack it in a safe, compatible container. The unit's modularity reduces disassembly and packing time at the shipping end and unpacking and reassembly time at the receiving end. Once onsite, crews can configure the modules and install the shakers, using bolted, not welded, connections.

MEERKAT PT Dual Shaker



MEERKAT PT Low-Profile Dual Shaker

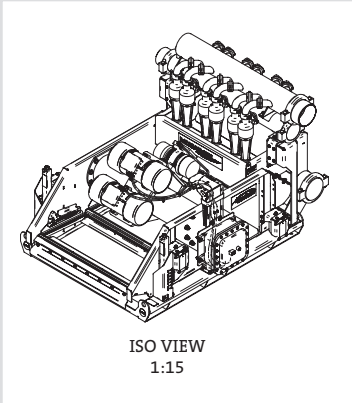


Features and Benefits

- Combines two or three MEERKAT PT shakers into one integral assembly by bolting together skids with field-installable kit
- Standard assembly includes common possum belly
- Available options:
 - Multiple header tanks
 - Mud cleaner
 - Lifting frame
 - Distribution box
- Can be lifted/rigged as single unit
- Single flowline connection to shakers
- Feeder slide gates integral to possum belly
- Flow distribution controlled by slide gates
- Flow can be opened/closed to any shaker
- Flow can be regulated by adjusting slide gate height

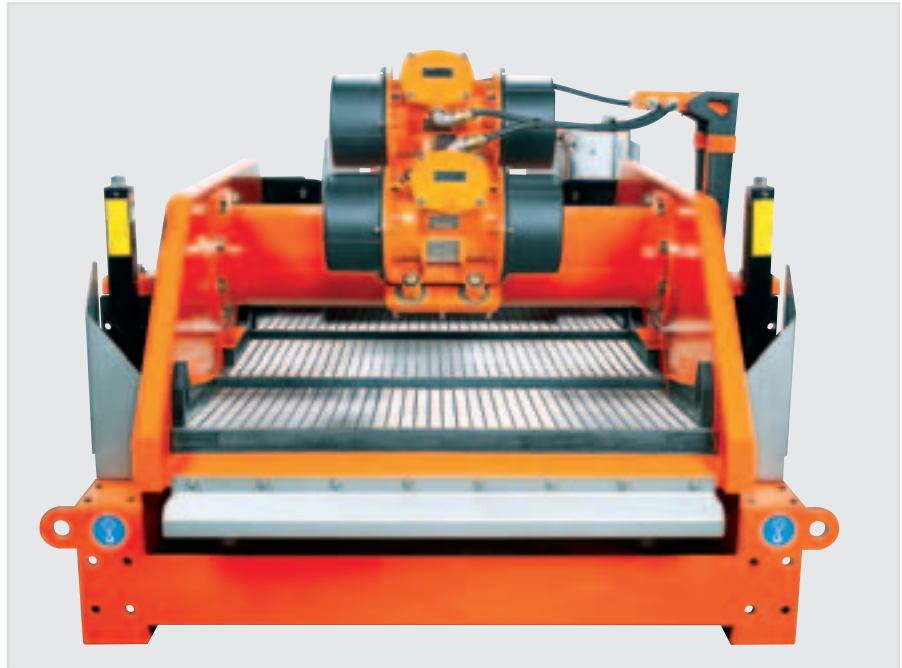
The MEERKAT PT shaker configures to your needs

MEERKAT PT MUD CLEANER*



Mud cleaners can be installed on the single, dual and triple configurations:

- The D-SANDER* unit is available in two- or three-cone
- The D-SILTER* unit is available in six, eight or ten twin-cone
- Low profile (approx. 64 in. [1,626 mm] to top of trough)
- Integral bypass between shaker and D-SILTER/D-SANDER units
- Compact footprint
- Allows inspection/maintenance without ladders or scaffolds
- Operates as D-SILTER and D-SANDER units and flowline shaker independently



These configurations are just the beginning

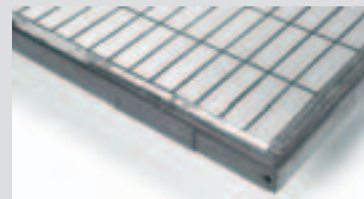
M-I SWACO is currently developing additional configurations of the MEERKAT PT shaker. To see for yourself what we have planned,

visit an M-I SWACO representative to review the latest specifications for our soon-to-be-launched models.

Composite screens provide longer life and more screen area

M-I SWACO high-capacity composite shaker screens are the most rugged, long-lasting and efficient screens available. The new composite screens, unique in the industry, provide resistance to corrosive drilling fluids. The screens also offer significant fluid capacity, excellent resistance to blinding, drier solids discharge and a large net-usable screen area.

Most significantly, our unique design does not compromise performance. The new screens perform on par with the MAGNUM* and MAGNUM XR MESH* screens that have been used effectively in the field for years.



Composite construction creates an ultra-tight seal between the screen and screen bed and eliminates solids buildup and costly solids bypass. The unique screen-locking mechanism wedges the screen firmly in place and allows the screen to be removed for repair or replacement.



This information is supplied solely for informational purposes and M-I SWACO makes no guarantees or warranties, either expressed or implied, with respect to the accuracy and use of this data. All product warranties and guarantees shall be governed by the Standard Terms of Sale. Nothing in this document is legal advice or is a substitute for competent legal advice.

©2007 M-I LLC. All rights reserved. *Mark of M-I LLC
DBR.1308.0710.R1 (E) 200 Litho in U.S.A.



Head Office Australia
17 Oxleigh Drive Malaga Western Australia 6090
PO Box 2012 Malaga Western Australia 6944
T +61 8 9249 7599 F +61 8 9249 7699
www.adgglobalsupply.com